



143 Maitland Road Mayfield NSW

Position yourself in the heart of Newcastle's fast-growing inner-west with this exceptional opportunity along Maitland Road, Mayfield. Perfect for investors, developers, or owner-occupiers, this property offers incredible exposure on one of the city's busiest arterial routes.

Every day, thousands of cars pass by, ensuring your business-or your tenants-benefit from premium visibility and foot traffic.

Beyond the prime location, the building itself is a standout.

Recently renovated, it combines charm and modern functionality, creating a professional and welcoming

[For full version visit the website](https://www.mulliganproperty.com.au)

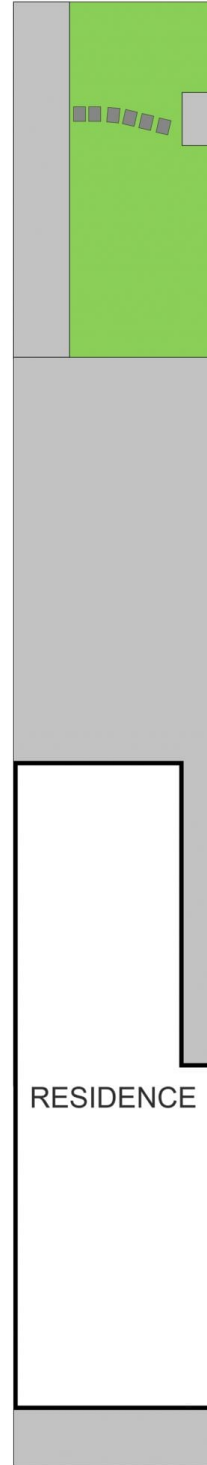
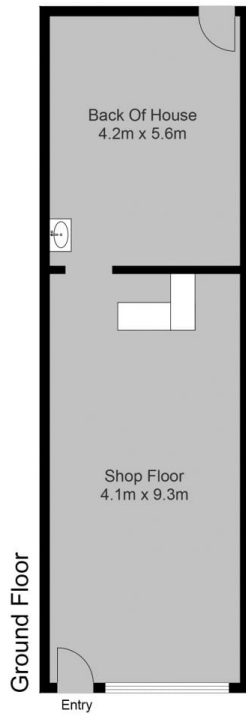
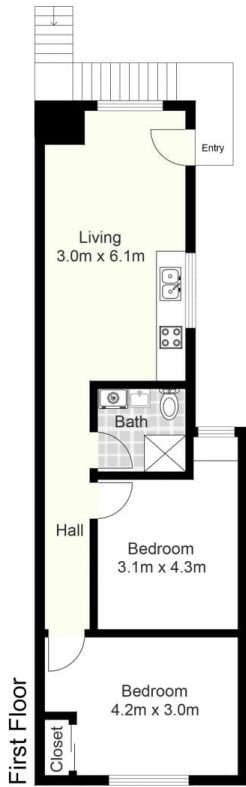
Type : Land
Price : \$ 838,000
Land Size : 180 sqm
View : <https://www.mulliganproperty.com.au/8479165>



Jesse Mulligan
0432 160 186



Ella Bennett
0478 889 748



143 Maitland Rd, Mayfield

All information contained herein is gathered from sources we deem reliable. However, we cannot guarantee its accuracy and act as a messenger only in passing on the details. Interested parties should rely on their own inquiries and the contract for sale. The floor plans are artist's impressions only. The site plan is not to scale.