






1-2/13 Lillypilly Drive Maryland NSW

6  2  2 

Inviting Formal Expressions Of Interests and Closure of Offers by 5pm on May 22nd

Positioned in a quiet, family-friendly street, 1-2/13 Lillypilly Drive presents a rare and versatile real estate opportunity with two well-designed properties offered on one title.

Whether you're a savvy investor seeking strong rental returns, a homeowner looking to offset your mortgage, or a multi-generational family wanting to live close yet independently, this property delivers flexibility, comfort, and long-term value.

Each property has been thoughtfully laid out to maximise

[For full version visit the website](https://www.mulliganproperty.com.au)

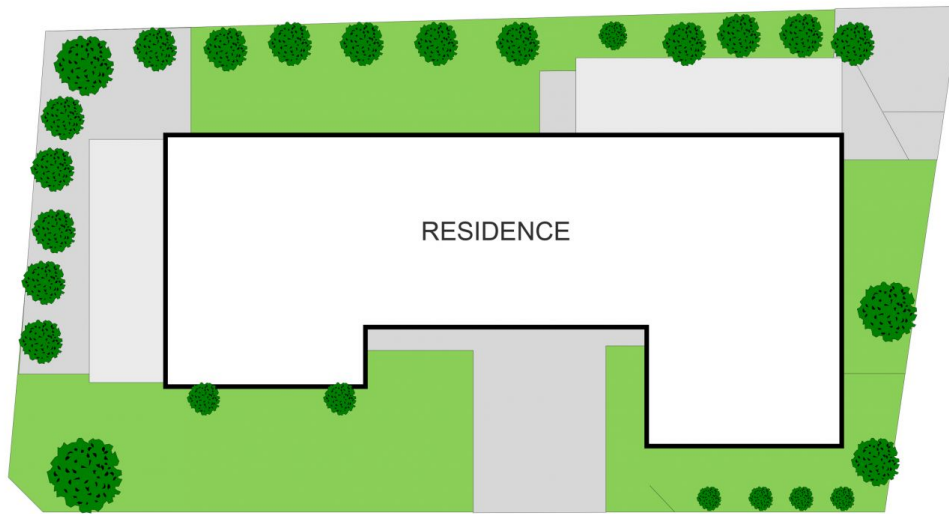
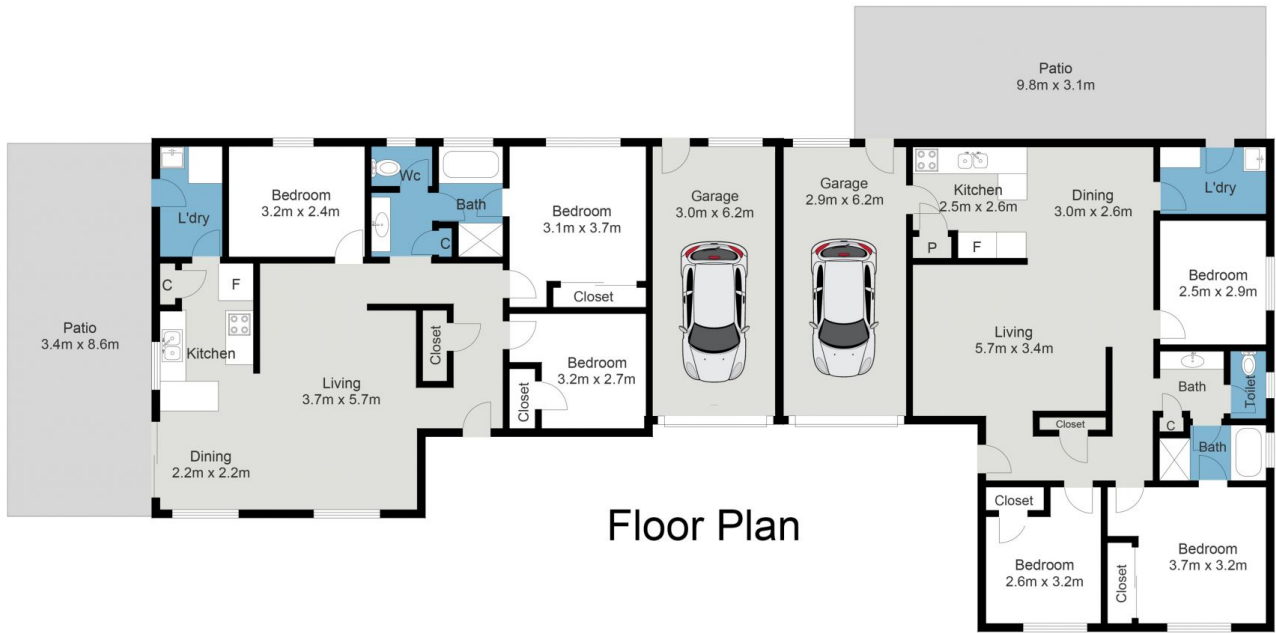
Type : Block of Units
Price : Expressions Of Interest Closing 22/05
Land Size : 800 sqm
View : <https://www.mulliganproperty.com.au/8682915>



Jesse Mulligan
0432 160 186



Ella Bennett
0478 889 748



13 Lillypilly Drive, Maryland

THIS FLOORPLAN IS PROVIDED WITHOUT WARRANTY OF ANY KIND. THAT MEDIA DISCLAIMS ANY WARRANTY INCLUDING, WITHOUT LIMITATION, SATISFACTORY QUALITY OR ACCURACY OF DIMENSIONS.